



SLIDING VEHICLE ACCESS GATE INSTALLATION GUIDE

Ensure smooth and secure vehicle access with SafeSite's Sliding Vehicle Access Gate, available in both single and double leaf configurations.

People to Install:



Equipment / Accessories Needed:

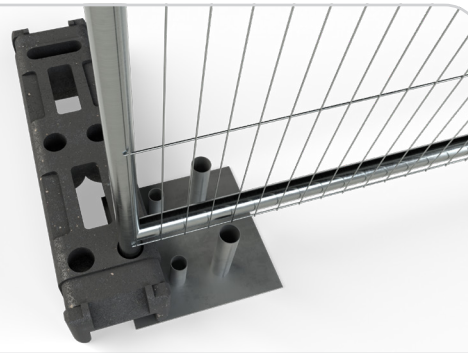
- Impact driver / Coupler Spanner
- HD Gripper Couplers x4/8
- M12 Nuts x1/2
- M12 Flat Washers x1/2

1



Position the pre-installed fencing line with rubber feet in place.

2



Position the sliding gate base plate as shown in the diagram. Ensure the upright tubes are located on either side of the existing fence panel.

3



Place the sliding gate panel, with wheels pre-installed, on the site side of the fencing.

4



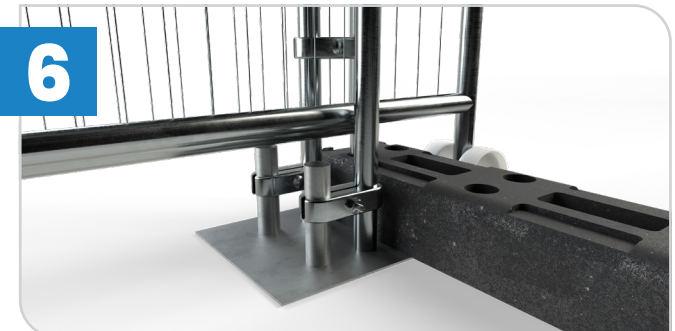
Fit the sliding gate bar over the previously positioned panel. The bar will slot over the two smaller tubes on the base plate, securing the sliding panel. Ensure the side with the bolt thread is facing the inside of the site.

5



Using two HD Gripper Couplers, connect the gate bar to the existing fence panel – one at the top and one at the bottom, as illustrated.

6



Using two HD Gripper Couplers, connect the gate base plate to the gate bar. Attach from the larger upright tubes to the gate bar on both sides of the gate.



Useful Tip: To secure the sliding gate, use a suitable chain and padlock (available separately)



Wear the appropriate PPE for this task. 01



SLIDING VEHICLE ACCESS GATE INSTALLATION GUIDE

Ensure smooth and secure vehicle access with SafeSite's Sliding Vehicle Access Gate, available in both single and double leaf configurations.

People to Install:



Equipment / Accessories Needed:

- Impact driver / Coupler Spanner
- HD Gripper Couplers x4/8
- M12 Nuts x1/2
- M12 Flat Washers x1/2



On the bolt-threaded side of the gate bar, secure the Std stabiliser and rubber fence foot on the inside of the site using an M12 nut and washer on the bolt-thread.



After installation, verify that the sliding gate panel operates smoothly and without obstruction.



For double-leaf gate installations, repeat the above procedure in a mirrored configuration on the opposite side of the gate opening.



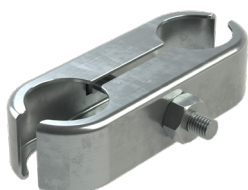
Useful Tip: To secure the sliding gate, use a suitable chain and padlock (available separately)



Installation parts

Measurements in mm

- 1** **HD Gripper Fence Coupler**
TFS100520
3m Quantity: 4
6m Quantity: 8



Size (mm)	Weight (kg)
-----------	-------------

H35 x W140 x D55	0.4
------------------	-----

- 2** **Std Stabiliser**
TFS100740
3m Quantity: 1
6m Quantity: 2



Size (mm)	Weight (kg)
-----------	-------------

H1487 W45	3.2
-----------	-----

- 3** **Rubber Fence Foot**
TFS100605
3m Quantity: 2
6m Quantity: 4



Size (mm)	Weight (kg)
-----------	-------------

H115 x W750 x D200	18
--------------------	----

- 4** **M12 Nuts**
GSFS025
3m Quantity: 1
6m Quantity: 2



Size (mm)	Weight (kg)
-----------	-------------

-	-
---	---

- 5** **M12 Flat Washers**
GSFS033
3m Quantity: 1
6m Quantity: 2



Size (mm)	Weight (kg)
-----------	-------------

-	-
---	---

- 6** **Sliding Vehicle Gate Bar**
TFS100486
3m Quantity: 1
6m Quantity: 2



Size (mm)	Weight (kg)
-----------	-------------

H2100 x W191 x D38	4
--------------------	---

- 7** **Sliding Vehicle Gate Plate**
TFS100488
3m Quantity: 1
6m Quantity: 2



Size (mm)	Weight (kg)
-----------	-------------

H157 x W300 x D300	2.55
--------------------	------